







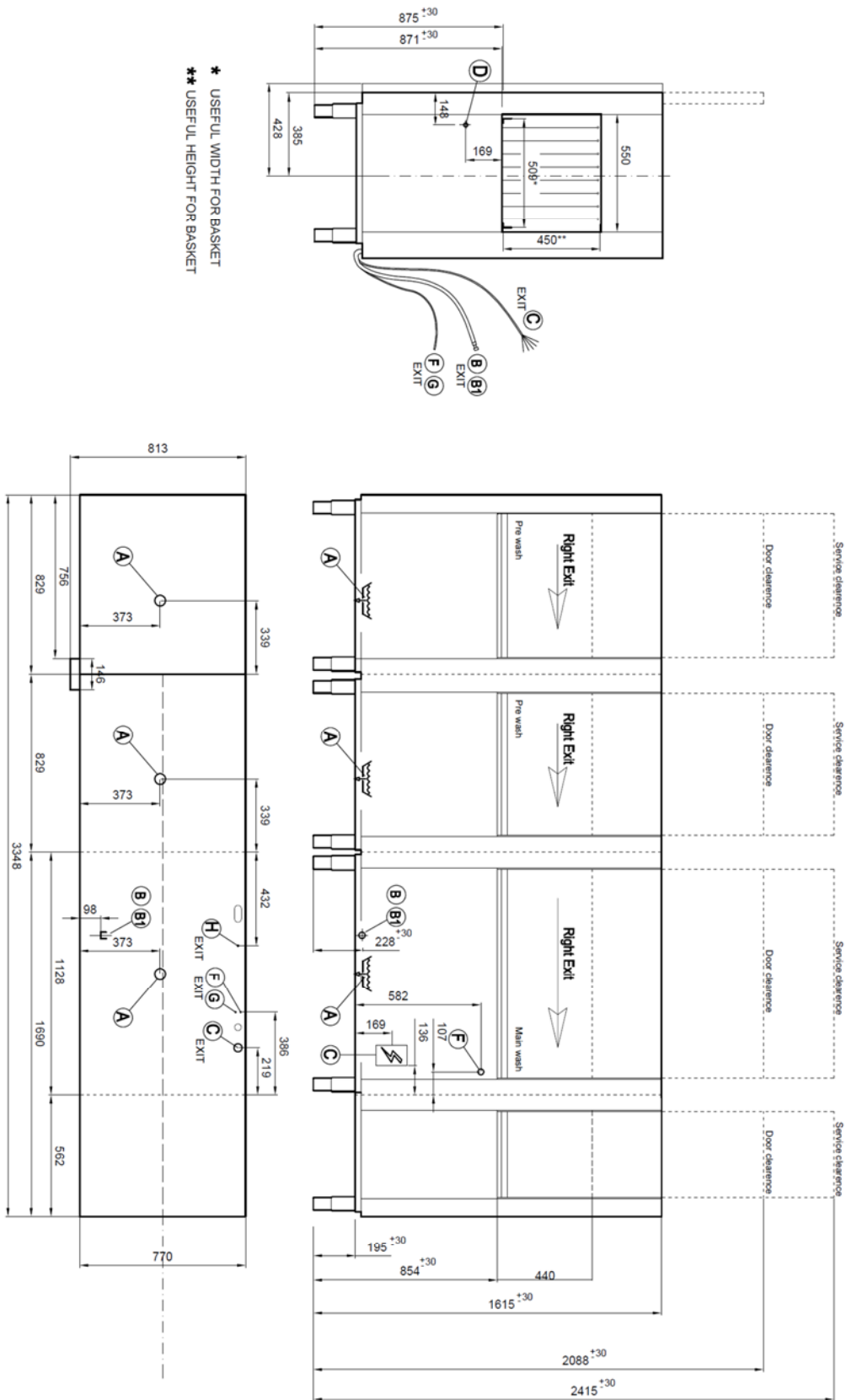
| | | | |
|---|---|--|-----------------------------------|
| ↓ | Model | protech 31-20.3 | |
| | Code Production | T213CDTD...(exit right) T213CDTS...(exit left) | |
| | Interface : |  | |
| | |  | |
| ↕ | Overall Dimension (Width-Depth-Height) *open | <i>mm</i> | 3.348 x 770 x 1.615(2088*) |
| | Packaging Dimension (WxDxH) | <i>mm</i> | 3.700 x 920 x 1850 |
| | Gross weight | <i>Kg</i> | 550 |
| | Net weight | <i>Kg</i> | 500 |
| | Volume | <i>mc</i> | 9,8 |
| □ | Rack size | <i>mm</i> | 500x500 |
| | Useable wash chamber height | <i>mm</i> | 450 |
| | Tank wash construction | | deep drawn |
| | Tank pre-wash construction | | deep drawn |
| | General construction | | double skin |
| | Door Construction | | double skin and insulated |
| ↘ | First & second Wash Tank volume | <i>liter</i> | 70 |
| | First & second Wash Tank heating element | <i>W</i> | 10.500 + 6.000 |
| | First & second Wash Tank surface strainers | | stainless steel |
| | First & second Wash drawer-like strainers | | optional |
| | Pre-Wash Tank volume | <i>liter</i> | 70 |
| | Pre-Wash Tank heating element | <i>W</i> | - |
| | Pre-Wash Tank surface strainers | | stainless steel |
| | Pre-Wash drawer-like strainers | | optional |
| ☑ | First & second Wash pump type | | double flow |
| | First & second Wash pump power | <i>W</i> | 1.500 |
| | First & second Wash pump delivery | <i>Lt/min</i> | 720 |
| | First & second Wash temperature | <i>°C</i> | 60 |
| | Pre-Wash pump type | | double flow |
| | Pre-Wash pump power | <i>W</i> | 1.500 |
| | Pre-Wash pump delivery | <i>Lt/min</i> | 720 |
| | Pre-Wash temperature | <i>°C</i> | 45 |
| ↘ | Boiler 1 & Boiler 2 volume | <i>liter</i> | 17 + 17 |
| | Boiler 1 & 2 heating element (with 50°C inlet water) standard | <i>W</i> | 16.000 + 6.000 |
| | Boiler 1 & 2 heating element (with 10°C inlet water) | <i>W</i> | 30.500 + 12.000 |
| | Boiler 1 & 2 heating element (with 10°C inlet water +Recovery) | <i>W</i> | 25.000 + 12.000 |
| | Boiler 1 & 2 heating element (with 10°C inlet water +Recovery Plus) | <i>W</i> | 25.000 + 10.500 |
| | Back-flow system | | break tank |
| ☑ | Rinse type | | Duo Rinse |
| | Rinse pump | <i>W</i> | 200 + 200 |

| | | | |
|---|--|----------------|--------------------------|
| | Rinse pump delivery | Lt/min | 110 |
| | Rinse temperature | °C | 80 |
| | Rinse water consumption | Liter /hour | 490 max |
| | Inlet water temperature | °C | Cold:10-40°C Hot:45-60°C |
| | Optimal external water pressure | bar | from 2 to 4 |
|  | Drain system | | overflow |
| | Drain size | G | 1' ½" |
|  | Productivity – max speed | Racks per hour | 320 |
| | Productivity – general purpose | r/h | 250 |
| | | | |
| | Noise level | db | < 70 |
| | Conveyor power | W | 500 |
|  | Electric Connection | V - ph - Hz | 400V 3N 50Hz |
| | Max Electric Power with 50°C standard | W | 43.900 |
| | Max Electric Power with 10°C | W | 64.400 |
| | Max Electric Power with 10°C +recovery | W | 59.100 |
| | Max Electric Power with 10°C +recovery Plus | W | 57.600 |
|  | Plates racks | Nr 1 | 780072 |
| | Flat Rack | Nr 1 | 780135 |
| | Cutterly Rack | Nr 1 | 780139 |
| | Electric cable | | not included |
| | Drain hose | | YES |
| | Fill hose | | YES |

| | | |
|--|--|----------|
| | Rinse aid and detergent dispenser (Y) | Optional |
| | Drying zone (A) or (L) | Optional |
| | Drying zone sequenzial (AA) or (LL) | Optional |
| | Corner drying zone on 90° (B) or (I) | Optional |
| | Corner drying zone on 90° sequential (BB) or (II) | Optional |
| | Heat recovery system (R) or (Z1) | Optional |
| | Heat recovery system plus (RR) or (ZZ) | Optional |
| | Kit Chemical product's level probe (999257) | Optional |
| | Main switch on board (Q) | Optional |
| | Emergency switch (X) | Optional |
| | Kit End limit switch (75861) | Optional |
| | Corner prewash (P) | Optional |
| | Neutral entry module (M) | Optional |
| | Neutral zone module (between wash and rinse) (V) | Optional |
| | Drawer pre-filter (J) | Optional |
| | Exhaust port (E) | Optional |
| | Heat pump (O) | Optional |
| | Possibility for shipment in separate modules (2) (3) | Optional |

| | | | | | | |
|-----------|--|-----------|----------|--|--------|-----------------|
| A | | Ø 1"1/2 M | D | | Ø PG11 | End switch |
| A1 | | Ø 31 M | E | | Ø 250 | Steam exhaust |
| B | | G 3/4" M | F | | Ø 14 M | Detergent inlet |
| B1 | | G 3/4" M | G | | Ø 7 M | Rinse aid inlet |
| C | | PG36 | H | | Ø 6 | Equipotential |
| | | | L | | Ø 250 | Dryer station |

| | | | |
|----------------------------|-------------|------------------|-------|
| Installation layout | | Rack Type | |
| Designed by: | A.CHERICOMI | Denomination: | |
| Date: | 28.05.2018 | Code: | T213D |
| | | Rev.: | 00 |



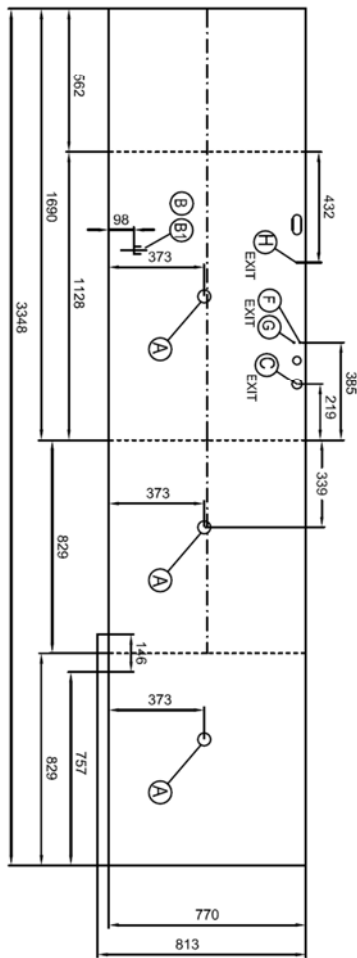
| | | | | | | |
|----|--|-----------|---|--|--------|-----------------|
| A | | Ø 1"1/2 M | D | | Ø PG11 | End switch |
| A1 | | Ø 31 M | E | | Ø 250 | Steam exhaust |
| B | | G 3/4" M | F | | Ø 14 M | Delatgent inlet |
| B1 | | G 3/4" M | G | | Ø 7 M | Rinse and inlet |
| C | | PG36 | H | | Ø 6 | Equipotential |

| | | | |
|---|--|-------|---------------|
| L | | Ø 250 | Dryer suction |
|---|--|-------|---------------|

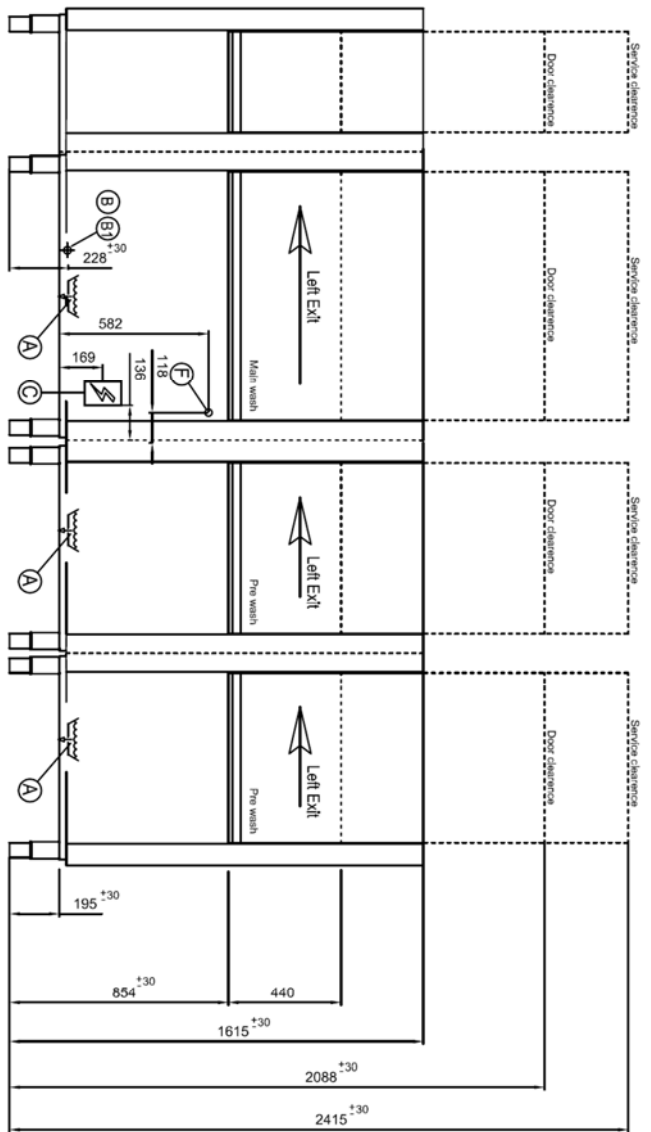
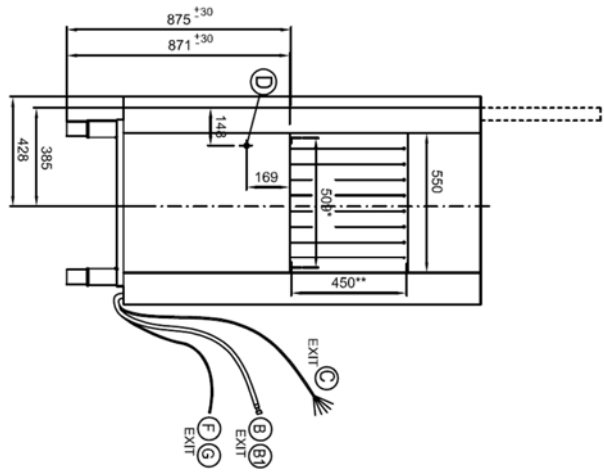
Installation layout

Rack Type

T213S 00



* USEFUL WIDTH FOR BASKET
** USEFUL HEIGHT FOR BASKET



Designed by: A.CHERICCHI
Date: 28.05.2018
Denomination:
Code: T213S
Rev.: 00